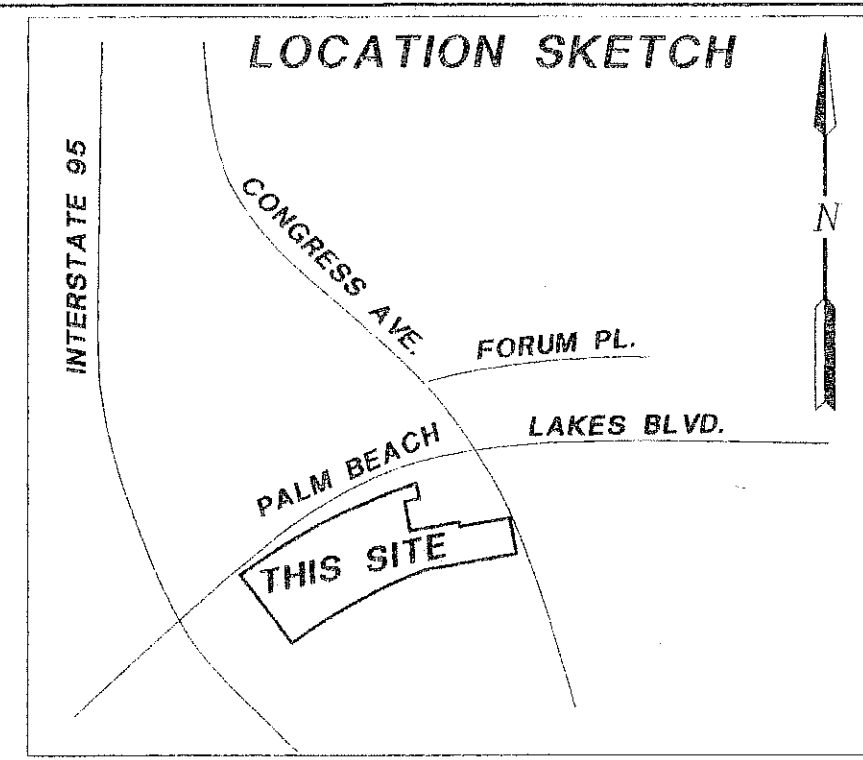


"WPB-PBL 2009"

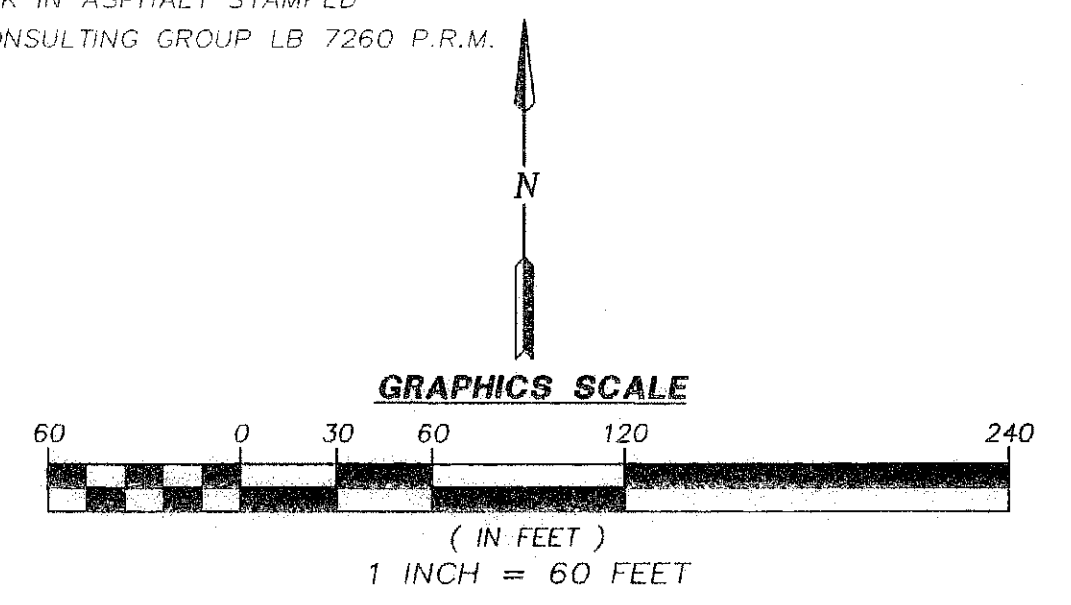
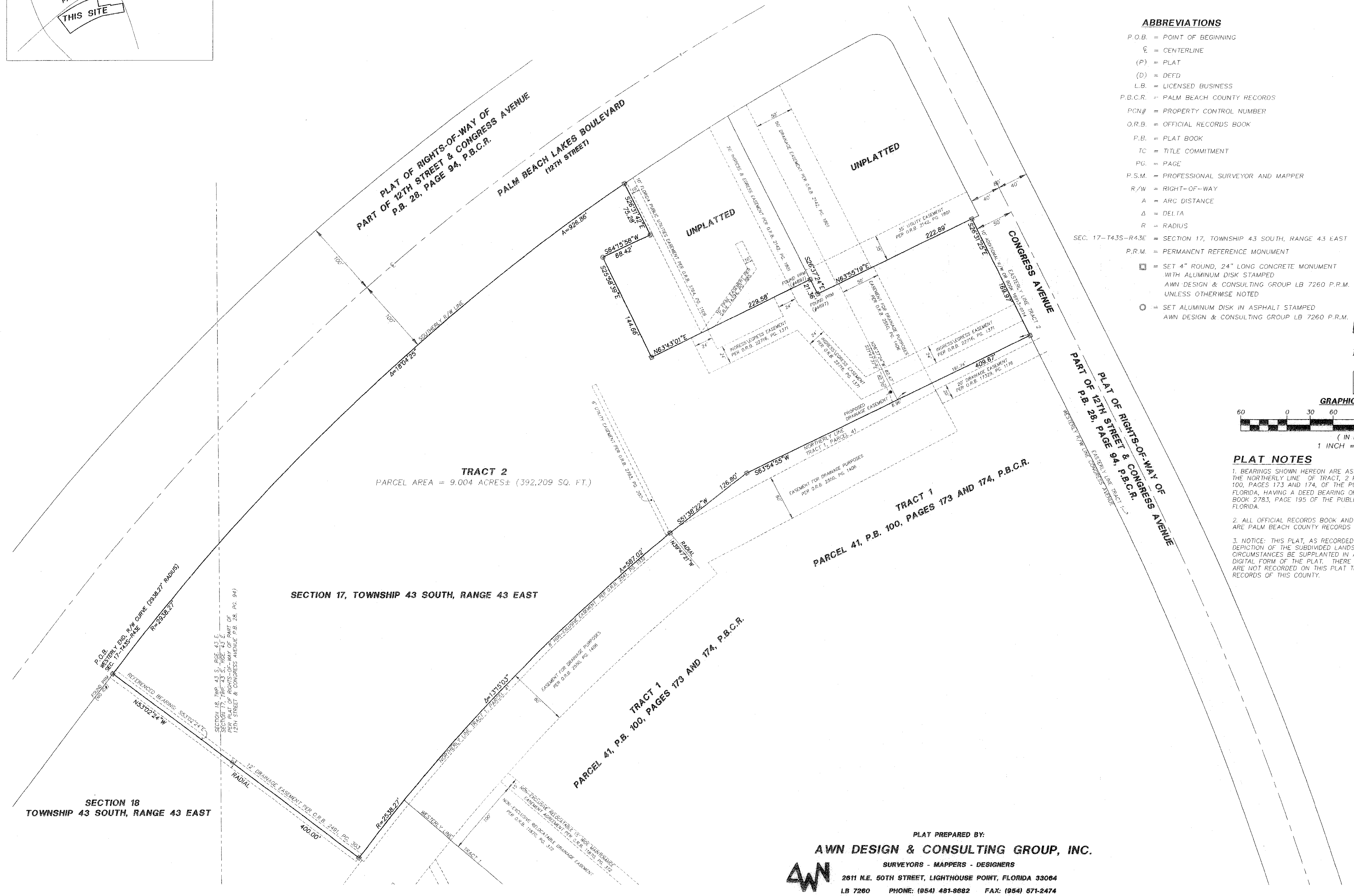
A PARCEL OF LAND LYING IN SECTION 17 AND SECTION 18, TOWNSHIP 43 SOUTH, RANGE 43 EAST AND ALSO BEING A REPLAT OF "TRACT 2" - "PARCEL 41" PLAT BOOK 100, PAGES 173-174 OF THE PUBLIC RECORDS OF PALM BEACH COUNTY, FLORIDA IN THE CITY OF WEST PALM BEACH, PALM BEACH COUNTY, FLORIDA MARCH, 2009



STATE OF FLORIDA
COUNTY OF PALM BEACH
THIS PLAT WAS FILED FOR
RECORD AT _____ M.
THIS _____ DAY OF _____
A.D. 2009 AND DULY RECORDED
IN PLAT BOOK _____ ON
PAGES _____ THROUGH _____
SHARON R. BOCK
CLERK & COMPTROLLER
PALM BEACH COUNTY
BY: _____
DEPUTY CLERK

- ABBREVIATIONS**
- P.O.B. = POINT OF BEGINNING
 - CL = CENTERLINE
 - (P) = PLAT
 - (D) = DEED
 - L.B. = LICENSED BUSINESS
 - P.B.C.R. = PALM BEACH COUNTY RECORDS
 - PCN# = PROPERTY CONTROL NUMBER
 - O.R.B. = OFFICIAL RECORDS BOOK
 - P.B. = PLAT BOOK
 - TC = TITLE COMMITMENT
 - PG. = PAGE
 - P.S.M. = PROFESSIONAL SURVEYOR AND MAPPER
 - R/W = RIGHT-OF-WAY
 - A = ARC DISTANCE
 - Δ = DELTA
 - R = RADIUS
- SEC. 17-T43S-R43E = SECTION 17, TOWNSHIP 43 SOUTH, RANGE 43 EAST
P.R.M. = PERMANENT REFERENCE MONUMENT
- = SET 4" ROUND, 24" LONG CONCRETE MONUMENT WITH ALUMINUM DISK STAMPED
AWN DESIGN & CONSULTING GROUP LB 7260 P.R.M. UNLESS OTHERWISE NOTED
 - = SET ALUMINUM DISK IN ASPHALT STAMPED
AWN DESIGN & CONSULTING GROUP LB 7260 P.R.M.

SHEET 2 OF 2



- PLAT NOTES**
1. BEARINGS SHOWN HEREON ARE ASSUMED BEARINGS AND REFERENCED TO THE NORTHERLY LINE OF TRACT 2, PARCEL 41, AS RECORDED IN PLAT BOOK 100, PAGES 173 AND 174, OF THE PUBLIC RECORDS OF PALM BEACH COUNTY, FLORIDA, HAVING A DEED BEARING OF S63°43'01"W PER OFFICIAL RECORDS BOOK 2783, PAGE 195 OF THE PUBLIC RECORDS OF PALM BEACH COUNTY, FLORIDA.
 2. ALL OFFICIAL RECORDS BOOK AND PLAT BOOK INFORMATION SHOWN HEREON ARE PALM BEACH COUNTY RECORDS UNLESS OTHERWISE NOTED.
 3. NOTICE: THIS PLAT, AS RECORDED IN ITS GRAPHIC FORM, IS THE OFFICIAL DEPICTION OF THE SUBDIVIDED LANDS DESCRIBED HEREIN AND WILL IN NO CIRCUMSTANCES BE SUPPLANTED IN AUTHORITY BY ANY OTHER GRAPHIC OR DIGITAL FORM OF THE PLAT. THERE MAY BE ADDITIONAL RESTRICTIONS THAT ARE NOT RECORDED ON THIS PLAT THAT MAY BE FOUND IN THE PUBLIC RECORDS OF THIS COUNTY.

PLAT PREPARED BY:
AWN DESIGN & CONSULTING GROUP, INC.
SURVEYORS - MAPPERS - DESIGNERS
2611 N.E. 50TH STREET, LIGHTHOUSE POINT, FLORIDA 33064
LB 7260 PHONE: (954) 481-8882 FAX: (954) 571-2474